



NEWSTEAD  
HOUSE

# EVENTS



NEWSTEADHOUSE.COM.AU

*Photo credit: Nathan Prostamo*



# Inside

Welcome to Newstead House	3
— Aerial Map	4
— Floor Plan	5
Our Unique Spaces	6
— Riverside Verandah	7
— Fountain Courtyard	8
— Harris Dining Room	9
— The Cellar	10
Packages & Pricing	11
— Celebration Package	12
— Private Dining Room Package	13
Filming & Photography	14
Planning your event	16
Get in touch	18





VENUE GUIDE

# The perfect venue for your next event

Discover Brisbane's rich history while creating unforgettable moments at Newstead House.

Overlooking the Brisbane River, this heritage-listed residence offers exclusive use of five distinctive event spaces, suited to everything from intimate gatherings to grand celebrations. From weddings and corporate functions to special occasions, Newstead House provides a timeless setting where historic elegance meets enduring charm.

NEWSTEAD  
HOUSE

#### ACKNOWLEDGMENT OF COUNTRY

We acknowledge the Traditional custodians of the land on which Newstead House stands. We pay our respects to their Elders past, present and emerging, and recognise the rich traditions and continuing creative cultures of all Aboriginal and Torres Strait Island peoples of Australia.

*Photo credit: Nathan Prostanio*





1

*Newstead House*

2

*Fountain Courtyard*

3

*The Substation*

4

*Public Toilets*

5

*Playground*

6

*Playground Rotunda*

7

*Chess Board*

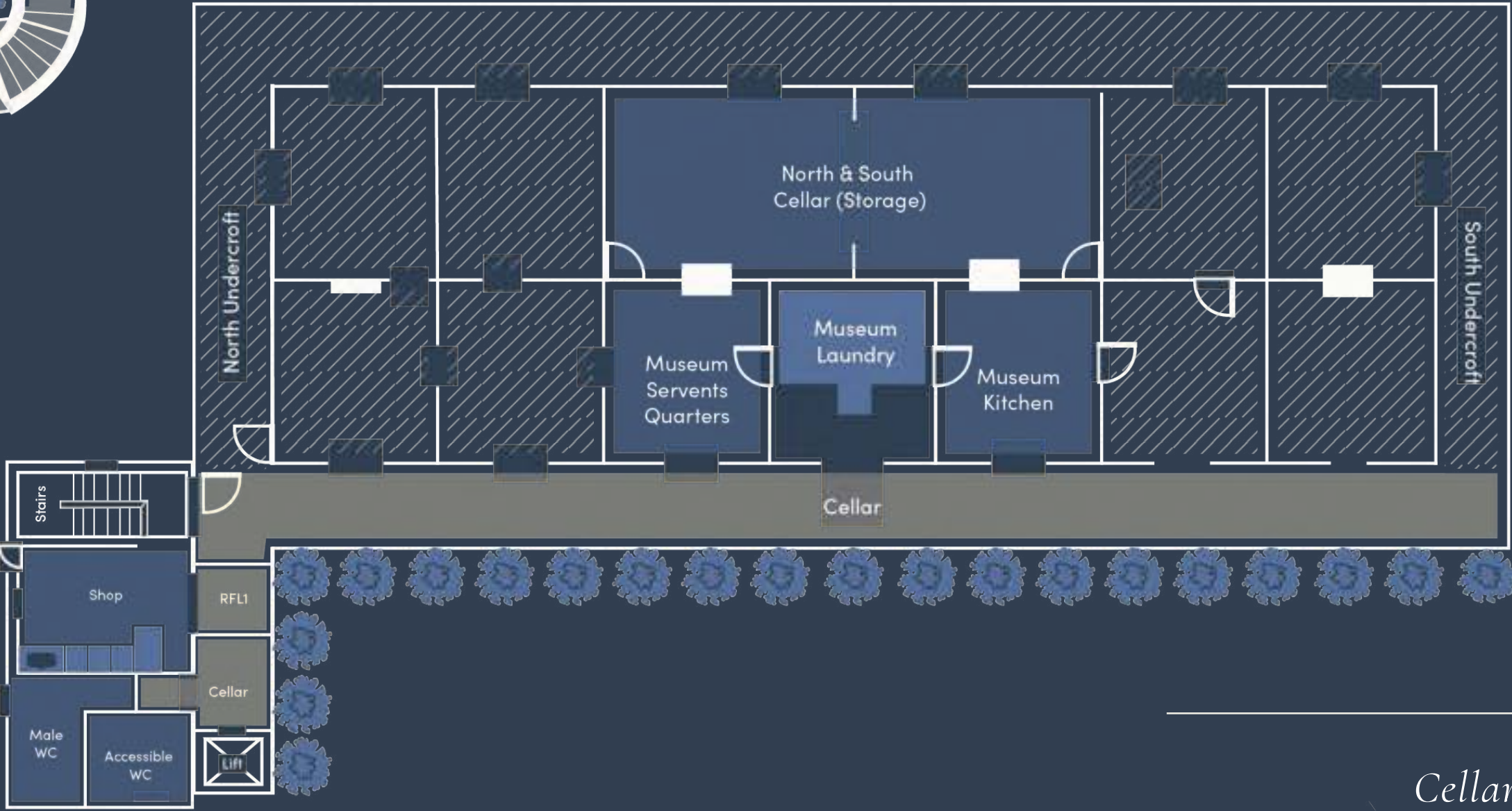
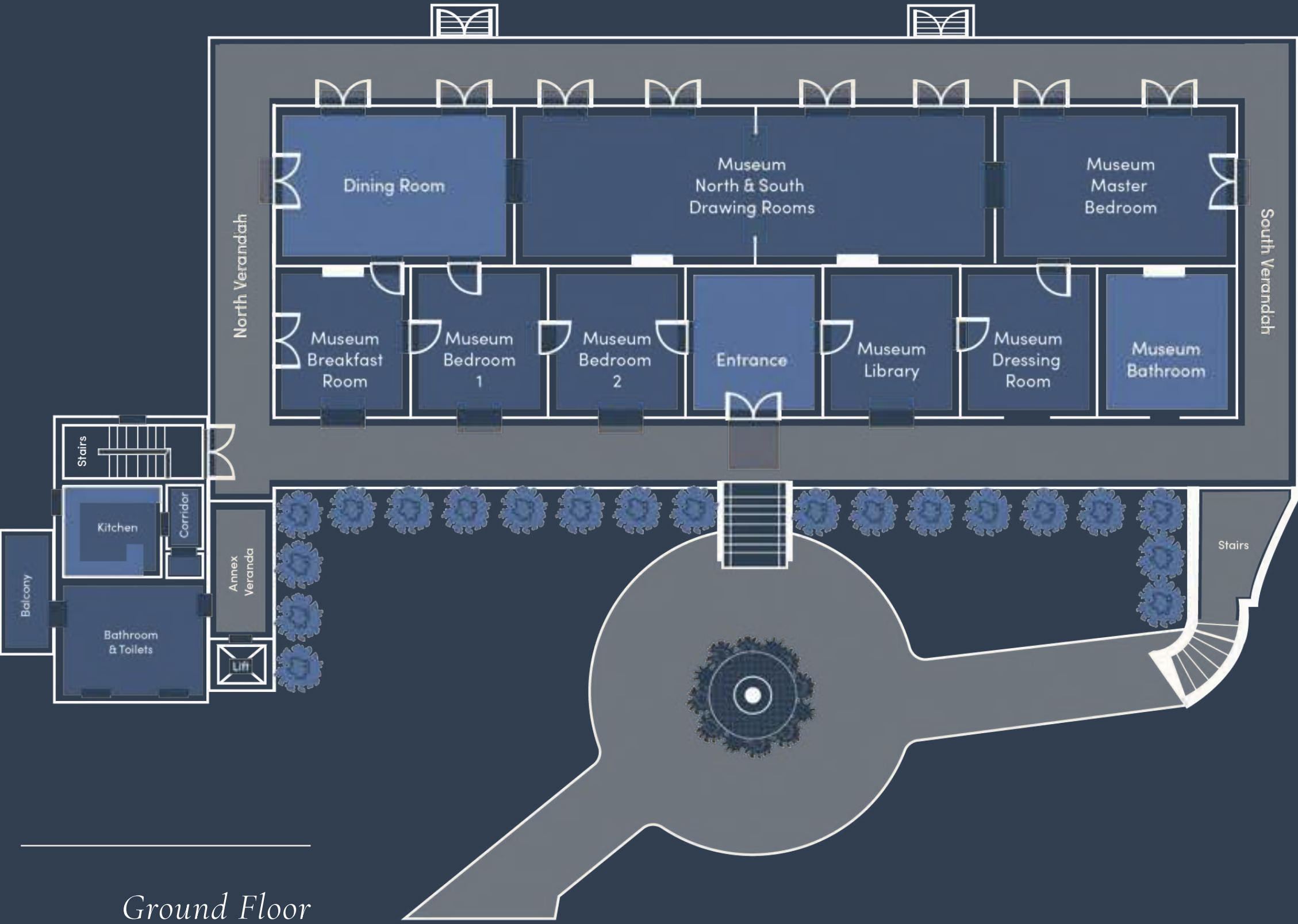
8

*Newstead Park Rotunda*

9

*Newstead Park Public Pontoon*







# Our unique spaces

NEWSTEAD  
HOUSE





# Riverside Verandah

The generous wraparound verandah at Newstead House offers a uniquely Queensland setting for refined occasions.

Riverside Verandah opens onto a grassed terrace, providing spectacular views across Newstead Park and out to the Brisbane River. Complementing this, the Western Verandah overlooks the elegant Fountain Courtyard, framed by views of the magnificent Moreton Bay Fig within the circular drive.

CAPACITY

- Cocktail style 120 guests
- Banquet style 60 guests
- Area size: 270.79m<sup>2</sup>

KEY FEATURES

- River views
- Weather protected
- Power available
- Wheelchair accessible (via lift)
- Bathrooms
- Plate up kitchen available
- Guided tour services available

PERFECT FOR

- Cocktail parties
- Networking events
- High teas
- Long lunches/dinners
- Wedding receptions

*Please see our packages on the following pages for pricing and inclusions.*







# Fountain Courtyard

The Fountain Courtyard offers a picturesque outdoor setting framed by the elegance of Newstead House.

Enclosed by manicured gardens, this refined space features a central fountain that creates a tranquil and inviting atmosphere. Suited to weddings, corporate functions and special occasions, the courtyard seamlessly blends heritage character with natural beauty, providing a timeless backdrop for sophisticated gatherings and memorable celebrations.

Photo credit: Nathan Prostamo



Photo credit: Kate Rose Photography



Photo credit:  
Nathan Prostamo

## CAPACITY

Cocktail style seats 150 guests  
Banquet style seats 100 guests  
Area size: 850m<sup>2</sup>

## KEY FEATURES

Power available  
Wheelchair accessible  
Bathrooms  
Plate up kitchen available  
Guided tour services available

## PERFECT FOR

Large celebrations  
Networking events  
Fundraising events  
Wedding ceremonies  
Wedding receptions

*Please see our packages on the following pages for pricing and inclusions.*



# Harris Dining Room

The Harris Dining Room presents an intimate and distinguished setting within Brisbane’s oldest dining room.

Available for exclusive hire, this exceptional space is ideal for refined dinner parties, executive board meetings and private gatherings of significance. Antique furnishings, rich timber detailing and an atmosphere steeped in heritage combine to create a setting of understated luxury, offering guests a truly memorable and elegant dining experience.

CAPACITY

Banquet style 12 guests  
Area size: 44.14m²

PERFECT FOR

Private lunches/dinners  
Board meetings

KEY FEATURES

- Power available
- Wheelchair accessible (via lift)
- Bathrooms
- Plate up kitchen available
- Guided tour services available

*Please see our packages on the following pages for pricing and inclusions.*



Photo credit: Florido Weddings







# The Cellar

The Cellar at Newstead House offers a secluded and atmospheric setting beneath the historic residence.

This intimate underground space is defined by exposed brickwork, heritage detailing and soft ambient lighting, creating a refined yet evocative backdrop for private gatherings. Rich in character and history, the Cellar provides a distinctive setting that lends depth, elegance and intrigue to memorable occasions.



## CAPACITY

Cocktail style 40 guests  
Area size: 95.53m<sup>2</sup>

## KEY FEATURES

Power available  
Wheelchair accessible  
Bathrooms  
Plate up kitchen available  
Guided tour services available

## PERFECT FOR

Bespoke cocktail parties  
Intimate long table gatherings  
One-of-a-kind-events  
Intimate wedding receptions

*Please see our packages on the following pages for pricing and inclusions.*



VENUE GUIDE

# Packages & Pricing

NEWSTEAD  
HOUSE



Photo credit: Nathan Prostamo



PACKAGES & PRICING

# Celebration Package

PRICING








\$3,000	4 hour hire period
\$5,000	8 hour hire period

Venue hire extension is available should you require more than an 8 hour hire period | \$500 per hour including venue supervisor, cleaning and security





Photo credit: Nathan Prostamo  
NEWSTEAD HOUSE

PACKAGE INCLUSIONS

-  **Exclusive use of the Courtyard and Verandah OR the Cellar**
-  **Dedicated volunteer tour guide for guests** (subject to availability)
-  **Guest access to explore the museum collection** inside Newstead House at the commencement of your event
-  **Capacity for up to**
  - ✓ **120 guests** in the Courtyard and Verandah
  - ✓ **40 guests** in the Cellar
  - ✓ **200 guests** when the Cellar and Substation are added (additional charges apply; see below)
-  **Use of venue furniture**, including sixty (60) white Americana chairs, fifteen (15) trestle tables and three (3) dry bars (please note: tablecloths are not included)
-  **Venue hire includes a venue supervisor, cleaning and security as required for the duration of your event**
-  **Access to the plate-up kitchen**

SPECIFICATIONS

-  All event activity, including set-up and packdown, must take place within the hired period
- Venue hire conclude by 10.00pm**
-  **Additional spaces are available for hire**, including the Cellar or Substation, at \$300 per hour (to be booked for the same duration as the primary venue hire)
- Bookings are dry hire only



PACKAGES & PRICING

# Private Dining Room Package

PRICING

\$1,500	4 hour hire period
\$2,500	8 hour hire period



*Venue hire extension available should you require more than an 8 hour hire period / \$350 per hour including venue supervisor and cleaning*



PACKAGE INCLUSIONS

-  **Exclusive use of the Harris Dining Room**, including access to the main house to view the internal rooms and museum collection
-  **Dedicated volunteer tour guide for guests** (subject to availability)
-  **Guest access to explore the museum collection** inside Newstead House
-  **Capacity for up to ✓12 guests**
-  **Use of the heritage dining table and chairs** for up to twelve (12) guests (table must be clothed by the hirer or caterer)
-  **Venue hire includes a venue supervisor and cleaning as required for the duration of your event**
-  **Access to the plate-up kitchen** (please note: bookings for the internal dining room require the use of a professional caterer)

SPECIFICATIONS

-  All event activity, including set-up and packdown, must take place within the hired period
- Venue hire conclude by 10.00pm**
-  **Additional spaces are available for hire**, including the Cellar or Substation, at \$300 per hour (to be booked for the same duration as the primary venue hire)
- Bookings are dry hire only



VENUE GUIDE

# Filming & Photography

NEWSTEAD  
HOUSE

Photo credit: Nathan Prostamo



EXTERNAL VENUE

Newstead House offers a refined and picturesque backdrop for outdoor photography and filming.

This option provides access to the grounds only and is suited to shoots that do not require use of the Verandah, Cellar or internal museum spaces. The gardens and surrounds offer a variety of elegant outdoor settings for both private and corporate photography and filming.

FILMING & PHOTOGRAPHY (EXTERNAL VENUE ONLY)			
\$600		4 hour hire period	
\$1,200		8 hour hire period	

INTERNAL & EXTERNAL VENUE

Newstead House provides a distinctive and versatile location for photography and filming, with access to the external grounds as well as the Verandah, Cellar and internal areas of the house.

Care of the museum collection is required at all times, with only selected items permitted to be touched or used as part of a shoot. This package includes a dedicated venue supervisor to facilitate access and oversee photography or filming activities.

FILMING & PHOTOGRAPHY (INTERNAL & EXTERNAL VENUE)			
\$1,200		4 hour hire period	
\$2,400		8 hour hire period	



Credit: Florido Weddings





# Planning Your Event

NEWSTEAD  
HOUSE



City Parklands manages events at Newstead House on behalf of the Newstead House Board of Trustees, providing seamless coordination for weddings, corporate functions and community events.

A dedicated City Parklands representative will be in touch to assist with your enquiry.

To help determine whether Newstead House is the right venue for your event, please review the following guidelines and considerations prior to completing an enquiry form.

LEAD TIME

A minimum lead time of four (4) weeks is required for all bookings to ensure events are planned and delivered seamlessly.

CONDITIONS OF ENTRY

All events must comply with the Conditions of Entry for Newstead House. These conditions outline appropriate activities and event types to ensure the protection and respectful use of the venue.

FEES & CHARGES

All package pricing outlined in this guide is inclusive of GST. A discount on venue hire fees is available to ACNC-registered charities and not-for-profit organisations. Further information regarding eligibility and application can be provided by the team.

Should any site or asset damage occur during the hire period, including damage caused by suppliers or contracted service providers, costs associated with rectification may be incurred.

INSURANCE, PERMITS & APPROVALS

Hirers are required to hold current Public Liability Insurance with a minimum cover of AUD \$20 million, as well as Workers Compensation Insurance, valid for the dates of the event. Hirers are also responsible for ensuring that all subcontractors engaged for the event hold appropriate and current Public Liability Insurance.

HORTICULTURAL REQUIREMENTS

To protect underground services and turf, no pegging or staking is permitted in the ground. The City Parklands team will work closely with hirers to ensure all activities align with the horticultural standards of Newstead House.

RESIDENTIAL NOISE IMPACTS

Newstead House is located within a residential precinct surrounded by apartments and townhouses. Noise impacts must be carefully managed, with consideration given to event duration, timing and overall sound levels.

HERITAGE REQUIREMENTS

As a heritage-listed property, Newstead House must be treated with care and respect. Items may not be fixed to the building, and depending on the nature of the event, protective flooring may be required. Furniture, fittings and museum items must not be moved or displaced as part of any event activity.





# Get in touch

Our specialist City Parklands events team is on hand to help bring your event to life.

To express your interest in holding an event at Newstead House, or to organise a site visit, complete the Venue Hire enquiry form.

Enquire via [newsteadhouse.com.au](http://newsteadhouse.com.au)

Email via [parkland.events@cityparklands.com.au](mailto:parkland.events@cityparklands.com.au)

Or call 07 3029 1888