



NEWSTEAD  
HOUSE

# WEDDINGS



*Photo credit: Kate Rose Photography*

NEWSTEADHOUSE.COM.AU



# Inside

Welcome to Newstead House	3
— Aerial Map	4
— Floor Plan	5
Our Unique Spaces	6
— Riverside Verandah	7
— Fountain Courtyard	8
— Harris Dining Room	9
— The Cellar	10
Packages & Pricing	11
— Ceremony Only Package	12
— Celebration Package	13
— Private Dining Room Package	14
Filming & Photography	15
Planning your event	17
Get in touch	19





# Celebrate your love story at Newstead House, where timeless elegance meets romantic charm.

Exchange your vows in the picturesque Fountain Courtyard, with the heritage-listed house providing the perfect backdrop for your ceremony.

For those dreaming of a more intimate affair, the Riverside Verandah offers a serene setting, ideal for smaller gatherings and cherished moments.

On your special day, enjoy full exclusive use of our historic house, ensuring a personalised and unforgettable wedding experience.

NEWSTEAD  
HOUSE

ACKNOWLEDGMENT OF COUNTRY

We acknowledge the Traditional custodians of the land on which Newstead House stands. We pay our respects to their Elders past, present and emerging, and recognise the rich traditions and continuing creative cultures of all Aboriginal and Torres Strait Island peoples of Australia.



Photo credit: Kate Rose Photography





1

*Newstead House*

2

*Fountain Courtyard*

3

*The Substation*

4

*Public Toilets*

5

*Playground*

6

*Playground Rotunda*

7

*Chess Board*

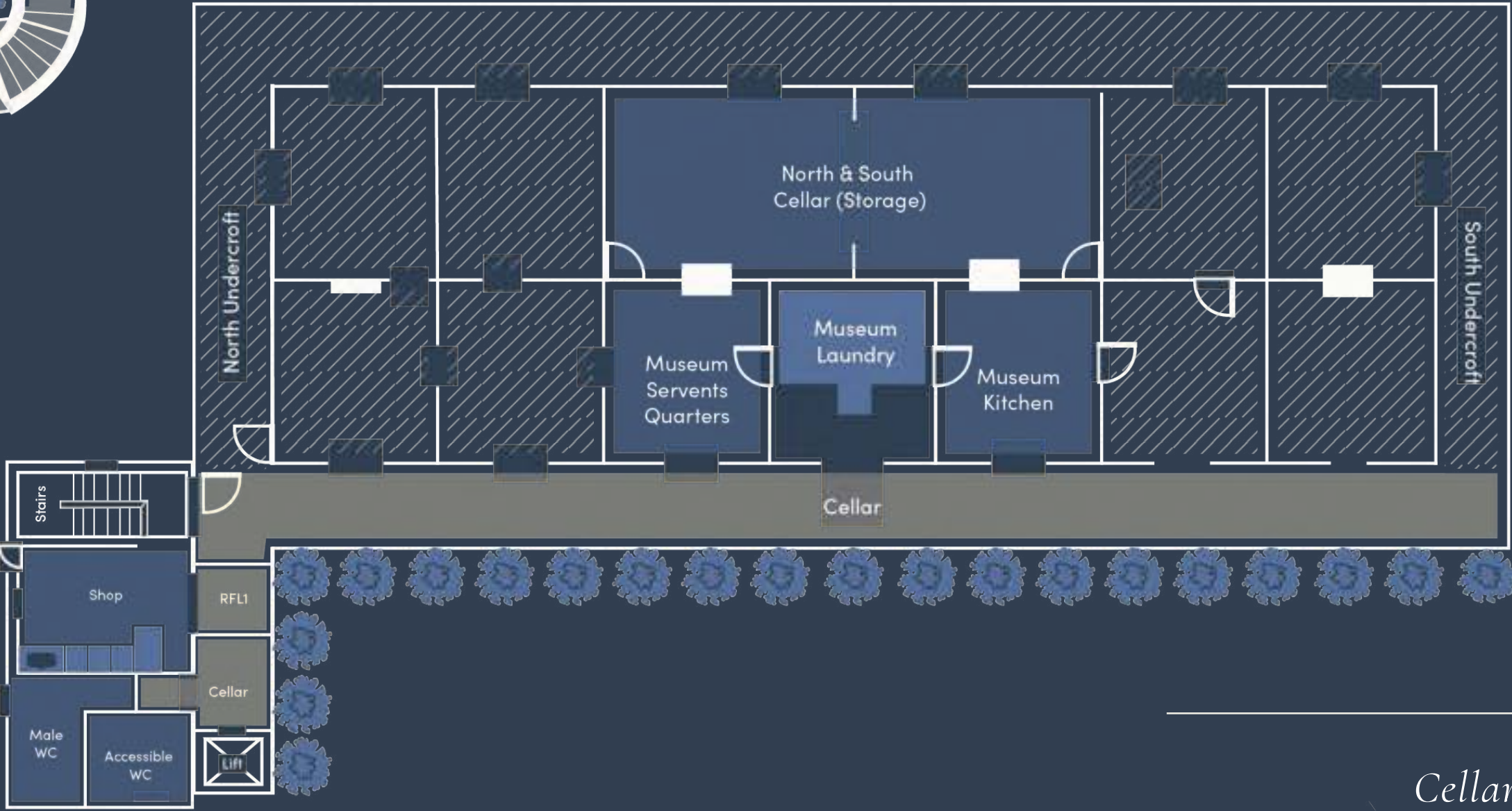
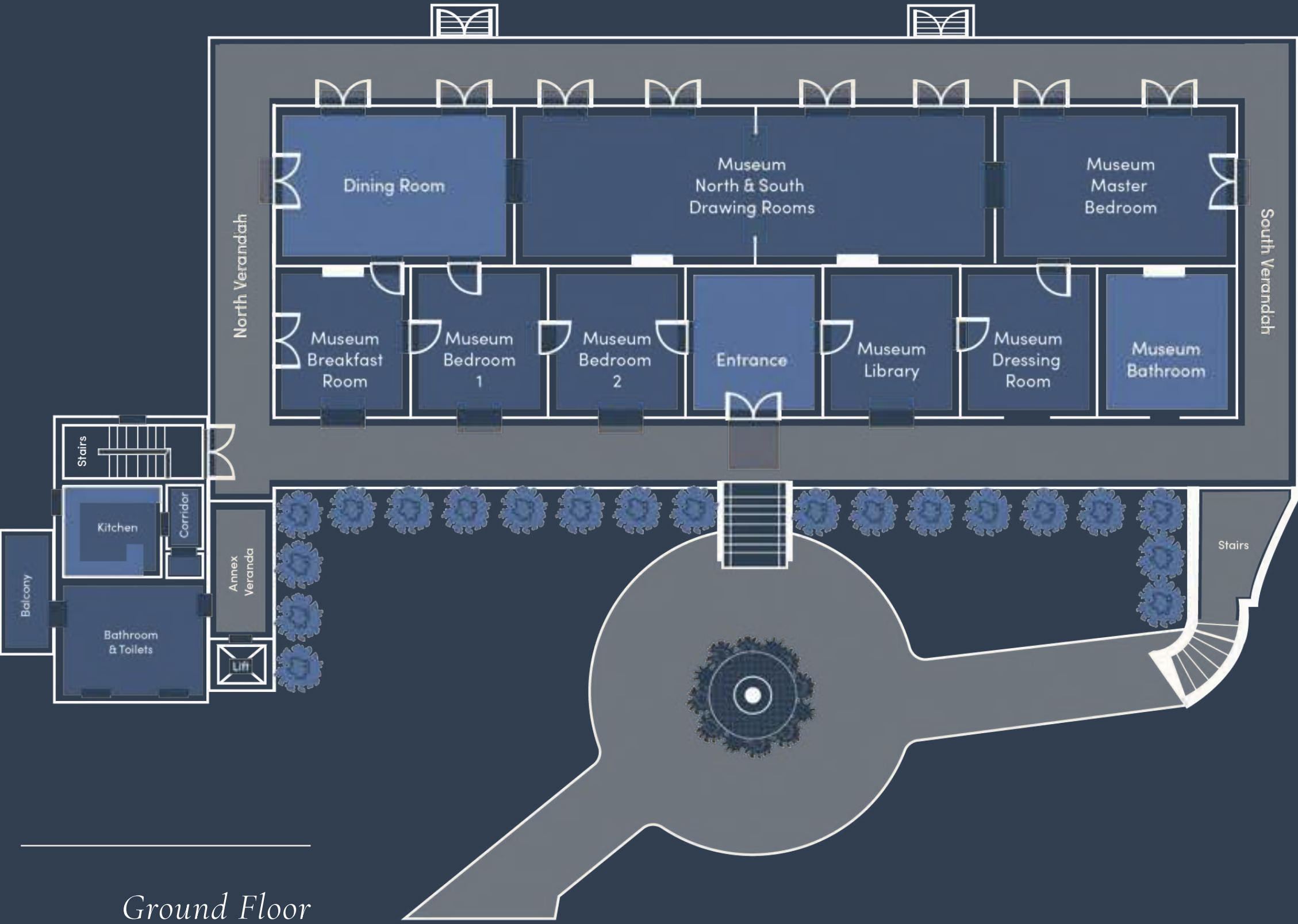
8

*Newstead Park Rotunda*

9

*Newstead Park Public Pontoon*







# Our unique spaces

NEWSTEAD  
HOUSE







# Fountain Courtyard

Nestled within the European residence, the Fountain Courtyard at Newstead House offers an enchanting setting for your wedding day.

Surrounded by manicured gardens, the courtyard features a beautiful central fountain, creating a tranquil and elegant atmosphere. Suitable for both wedding ceremonies and receptions, this unique space offers a seamless blend of heritage charm and natural beauty. Guests will enjoy the serenity of the gardens and the timeless appeal of this versatile location.

## CAPACITY

- Cocktail style 150 guests
- Banquet style 100 guests
- Area size: 850m<sup>2</sup>

## KEY FEATURES

- Power available
- Wheelchair accessible
- Bathrooms
- Plate up kitchen available (celebration package only)
- Guided tour services available

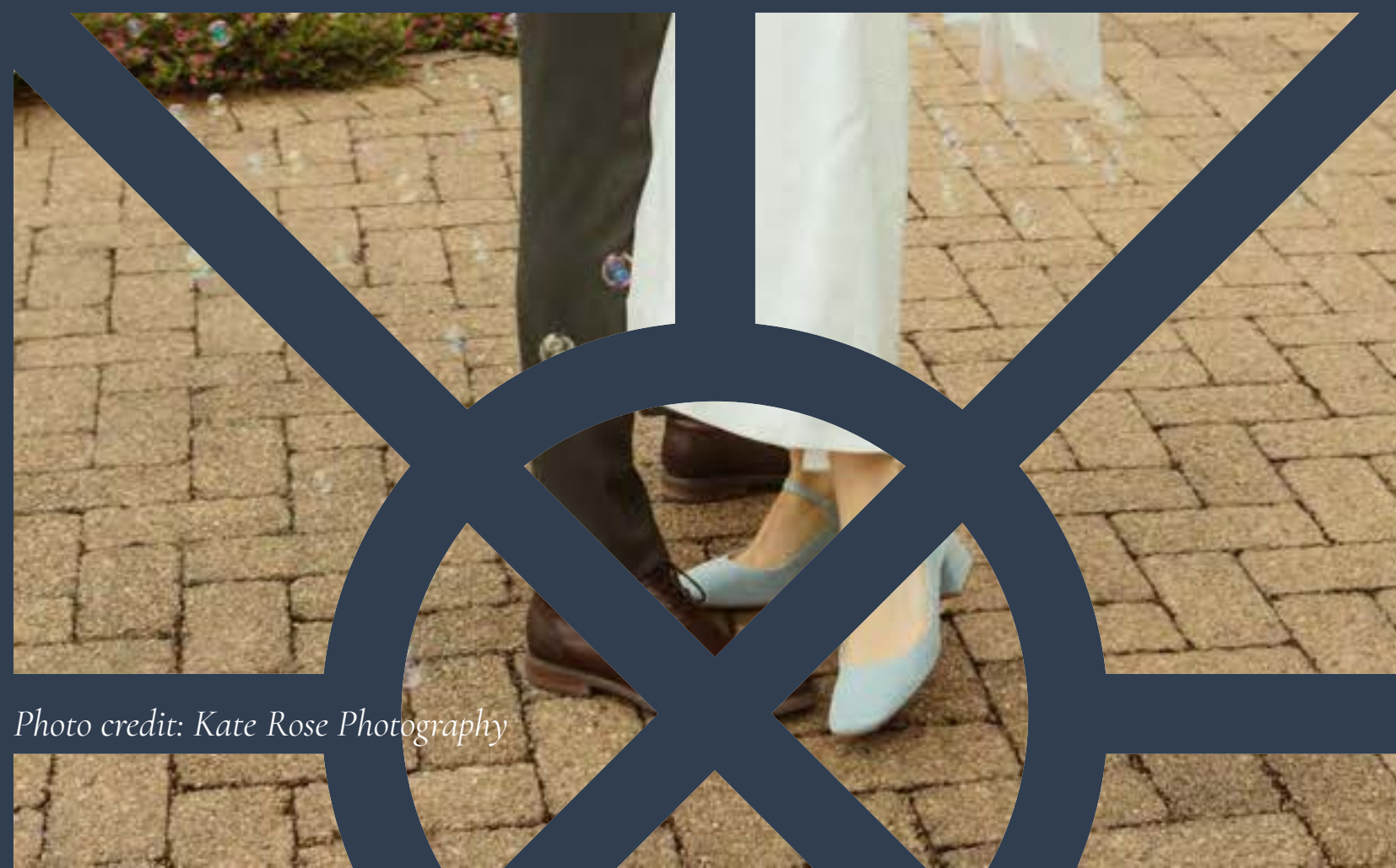
*Please see our packages on the following pages for pricing and inclusions.*



*Photo credit: Florido Weddings*



*Photo credit: Kate Rose Photography*



*Photo credit: Kate Rose Photography*



# Riverside Verandah

Perched gracefully above the Brisbane River, Newstead House’s Riverside Verandah offers a quintessential Queensland setting for your wedding.

The Riverside Verandah opens onto a tranquil, grassed terrace, where spectacular views of Newstead Park and the Brisbane River provide a stunning backdrop for your nuptials. Meanwhile, the Western Verandah overlooks the elegant Fountain Courtyard and the stately Moreton Bay Fig, creating a serene and picturesque atmosphere for your special day. This versatile space is perfect for both intimate ceremonies and receptions, offering an elevated, peaceful setting that captures the timeless beauty of Newstead House.

CAPACITY

- Cocktail style 120 guests
- Banquet style 60 guests
- Area size: 270.79m²

KEY FEATURES

- River views
- Weather protected
- Power available
- Wheelchair accessible (via lift)
- Bathrooms
- Plate up kitchen available
- Guided tour services available

*Please see our packages on the following pages for pricing and inclusions.*

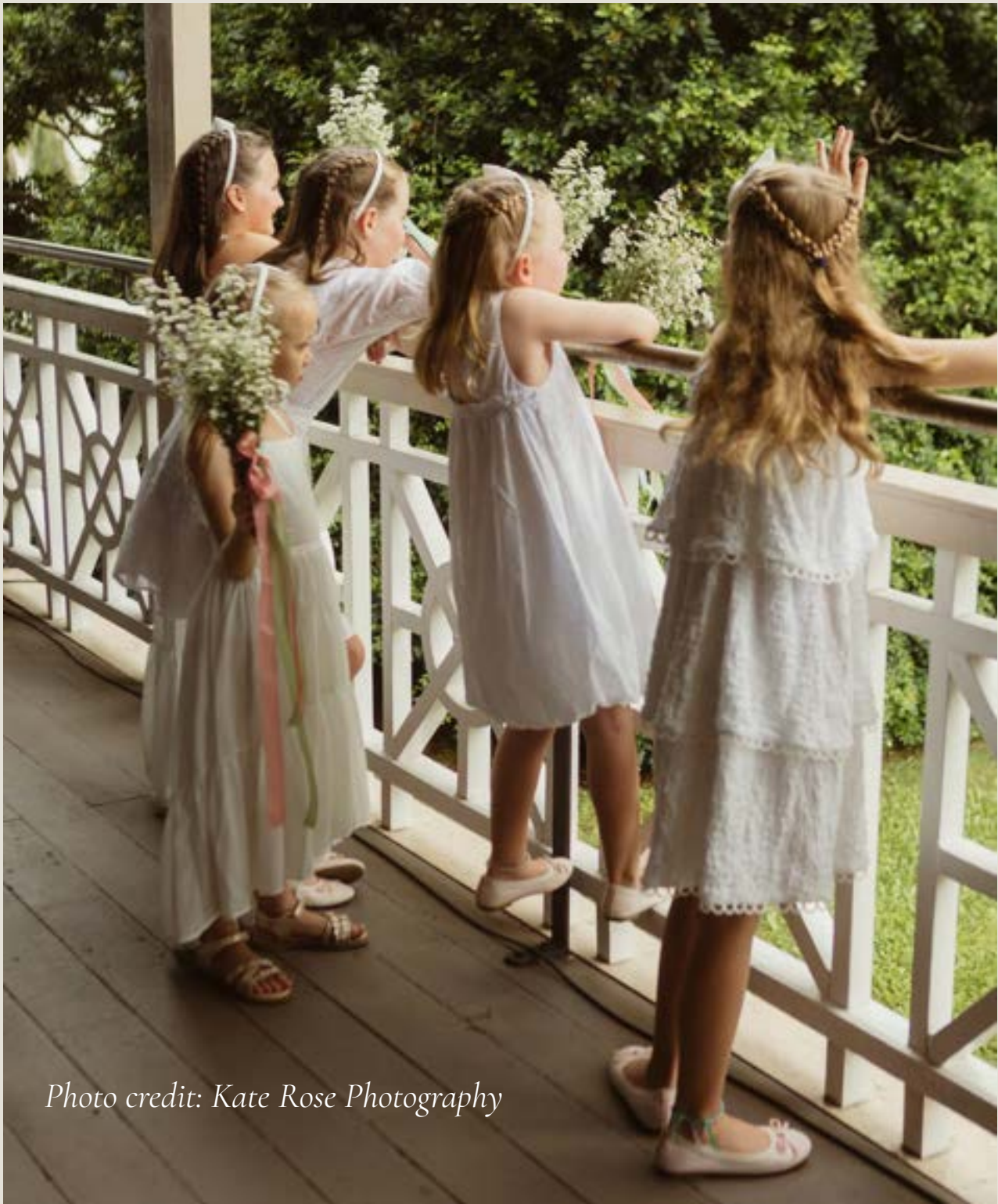


Photo credit: Kate Rose Photography







Photo credit: Florido Weddings



# Harris Dining Room



Celebrate your special day with your nearest and dearest in Brisbane's oldest dining room.

Perfect for petite wedding receptions, this exclusive space offers a sophisticated and historic setting. Featuring antique furnishings, rich timber accents, and an ambiance steeped in heritage, the Harris Dining Room is a truly unique experience.

## CAPACITY

Banquet style 12 guests

Area size: 44.14m<sup>2</sup>

## KEY FEATURES

Power available

Wheelchair accessible (via lift)

Bathrooms

Plate up kitchen available (professional caterers only)

Guided tour services available

*Please see our packages on the following pages for pricing and inclusions.*



NEWSTEAD HOUSE



Photo credit: Florido Weddings



# The Cellar

The underground chamber at Newstead House offers a truly unique, intimate setting perfect for both cocktail style celebrations and sit-down wedding receptions.

With its historic charm, exposed brick walls, and atmospheric lighting, it provides a distinctive ambiance that your guests will be enamoured by. This hidden gem adds a touch of history and elegance to your special day.



## CAPACITY

Cocktail style 40 guests  
Area size: 95.53m<sup>2</sup>

## KEY FEATURES

- Power available
- Wheelchair accessible
- Bathrooms
- Plate up kitchen available
- Guided tour services available

*Please see our packages on the following pages for pricing and inclusions.*





WEDDING GUIDE

# Packages & Pricing

NEWSTEAD  
HOUSE



*Photo credit: Emma Jade Photographer & Film*



PACKAGES & PRICING

# Ceremony Only Package

PRICING

\$2,500

4 hour hire period

Venue hire extension is available should you require more than a 4 hour hire period | \$300 per hour including venue supervisor

Photo credit: The Infinity Collective










NEWSTEAD HOUSE





Photo credit: Kate Rose Photography

PACKAGE INCLUSIONS

-  **Exclusive use of Newstead House grounds**, including the Courtyard and Verandah, with access to the main house to view internal rooms and the museum collection
-  **Dedicated volunteer tour guide for guests** (subject to availability)
-  **Unique photo locations** for the wedding party throughout the historic residence, surrounding manicured gardens and Newstead Park
-  **Guest access to explore the museum collection** inside Newstead House following the ceremony
-  **Capacity for up to 120 guests**
-  **Use of venue furniture**, including one (1) wrought iron table and two (2) matching chairs for registry signing, sixty (60) white Americana chairs, fifteen (15) trestle tables and three (3) dry bars (please note: tablecloths are not included)
-  **Venue supervisor** for the duration of your booking

SPECIFICATIONS

-  **Venue hire includes a four (4) hour booking period** inclusive of all event activity, including set-up and pack-down  
Venue hire must conclude by 6.00pm
- Recommended time allocation includes**
  - ✓ one (1) hour for supplier bump-in
  - ✓ 1.5–2 hours for the ceremony and celebrations (allowing 30 minutes for guest arrival, 20–30 minutes for the ceremony, 20–30 minutes for congratulations and photos, and 15 minutes for guest departure)
  - ✓ one (1) hour for supplier bump-out
- Ceremony times may vary depending on the time of year.**  
Please speak with the team for guidance
-  **Additional spaces are available for hire**, including the Cellar or Substation, at \$300 per hour (to be booked for the same duration as the primary venue hire)



PACKAGES & PRICING

# Celebration Package

PRICING

\$3,000	4 hour hire period
\$5,000	8 hour hire period

Venue hire extension is available should you require more than an 8 hour hire period | \$500 per hour including venue supervisor, cleaning and security

Photo credit: Kate Rose Photography



NEWSTEAD HOUSE



Photo credit: Emma Jade Photographer & Film

PACKAGE INCLUSIONS

	<b>Pair with a Ceremony Package or as a Reception only celebration</b>
	<b>Exclusive use of the Courtyard and Verandah OR the Cellar</b>
	<b>Dedicated volunteer tour guide for guests</b> (subject to availability)
	<b>Guest access to explore the museum collection</b> inside Newstead House at the commencement of your wedding
	<b>Capacity for up to</b> ✓ <b>120 guests</b> in the Courtyard and Verandah ✓ <b>40 guests</b> in the Cellar ✓ <b>200 guests</b> when the Cellar and Substation are added (additional charges apply; see below)
	<b>Use of venue furniture</b> , including sixty (60) white Americana chairs, fifteen (15) trestle tables and three (3) dry bars (please note: tablecloths are not included)
	<b>Venue hire includes a venue supervisor, cleaning and security as required for the duration of your wedding</b>
	<b>Access to the plate-up kitchen</b>

SPECIFICATIONS

	All event activity, including set-up and packdown, must take place within the hired period
	<b>Venue hire conclude by 10.00pm</b>
	<b>Additional spaces are available for hire</b> , including the Cellar or Substation, at \$300 per hour (to be booked for the same duration as the primary venue hire)
	Bookings are dry hire only



PACKAGES & PRICING

# Private Dining Room Package

PRICING

\$1,500	4 hour hire period
\$2,500	8 hour hire period

Venue hire extension available should you require more than an 8 hour hire period / \$350 per hour including venue supervisor and cleaning





Photo credit: Emma Jade Photographer & Film



PACKAGE INCLUSIONS

-  **Exclusive use of the Harris Dining Room**, including access to the main house to view the internal rooms and museum collection
-  **Dedicated volunteer tour guide for guests** (subject to availability)
-  **Guest access to explore the museum collection** inside Newstead House
-  **Capacity for up to ✓ 12 guests**
-  **Use of the heritage dining table and chairs** for up to twelve (12) guests (table must be clothed by the hirer or caterer)
-  **Venue hire includes a venue supervisor and cleaning** for the duration of your wedding
-  **Access to the plate-up kitchen** (please note: bookings for the internal dining room require the use of a professional caterer)

SPECIFICATIONS

-  All event activity, including set-up and packdown, must take place within the hired period
- Venue hire conclude by 10.00pm**
-  **Additional spaces are available for hire**, including the Cellar or Substation, at \$300 per hour (to be booked for the same duration as the primary venue hire)
- Bookings are dry hire only



WEDDING GUIDE

# Filming & Photography



NEWSTEAD  
HOUSE

Photo credit: Emma Jade Photographer & Film



EXTERNAL VENUE

Newstead House offers a refined and picturesque backdrop for outdoor photography and filming.

This option provides access to the grounds only and is suited to shoots that do not require use of the Verandah, Cellar or internal museum spaces. The gardens and surrounds offer a variety of elegant outdoor settings for both private and corporate photography and filming.

FILMING & PHOTOGRAPHY (EXTERNAL VENUE ONLY)			
<div></div>			
\$600		4 hour hire period	
\$1,200		8 hour hire period	

INTERNAL & EXTERNAL VENUE

Newstead House provides a distinctive and versatile location for photography and filming, with access to the external grounds as well as the Verandah, Cellar and internal areas of the house.

Care of the museum collection is required at all times, with only selected items permitted to be touched or used as part of a shoot. This package includes a dedicated venue supervisor to facilitate access and oversee photography or filming activities.

FILMING & PHOTOGRAPHY (INTERNAL & EXTERNAL VENUE)			
<div></div>			
\$1,200		4 hour hire period	
\$2,400		8 hour hire period	



Photo credit: Florido Weddings



WEDDING GUIDE

# Planning Your Wedding

NEWSTEAD  
HOUSE

Photo credit: The Infinity Collective



City Parklands manages events at Newstead House on behalf of the Newstead House Board of Trustees, providing seamless coordination for weddings, corporate functions and community events.

A dedicated City Parklands representative will be in touch to assist with your enquiry.

To help determine whether Newstead House is the right venue for your event, please review the following guidelines and considerations prior to completing an enquiry form.

LEAD TIME

A minimum lead time of four (4) weeks is required for all bookings to ensure events are planned and delivered seamlessly.

CONDITIONS OF ENTRY

All events must comply with the Conditions of Entry for Newstead House. These conditions outline appropriate activities and event types to ensure the protection and respectful use of the venue.

FEES & CHARGES

All package pricing outlined in this guide is inclusive of GST. A discount on venue hire fees is available to ACNC-registered charities and not-for-profit organisations. Further information regarding eligibility and application can be provided by the team.

Should any site or asset damage occur during the hire period, including damage caused by suppliers or contracted service providers, costs associated with rectification may be incurred.

INSURANCE, PERMITS & APPROVALS

Hirers are required to hold current Public Liability Insurance with a minimum cover of AUD \$20 million, as well as Workers Compensation Insurance, valid for the dates of the event. Hirers are also responsible for ensuring that all subcontractors engaged for the event hold appropriate and current Public Liability Insurance.

HORTICULTURAL REQUIREMENTS

To protect underground services and turf, no pegging or staking is permitted in the ground. The City Parklands team will work closely with hirers to ensure all activities align with the horticultural standards of Newstead House.

RESIDENTIAL NOISE IMPACTS

Newstead House is located within a residential precinct surrounded by apartments and townhouses. Noise impacts must be carefully managed, with consideration given to event duration, timing and overall sound levels.

HERITAGE REQUIREMENTS

As a heritage-listed property, Newstead House must be treated with care and respect. Items may not be fixed to the building, and depending on the nature of the event, protective flooring may be required. Furniture, fittings and museum items must not be moved or displaced as part of any event activity.





# Get in touch

Our specialist City Parklands events team is on hand to help bring your wedding to life.

To express your interest in holding an event at Newstead House, or to organise a site visit, complete the Venue Hire enquiry form.

Enquire via [newsteadhouse.com.au](http://newsteadhouse.com.au)

Email via [parkland.events@cityparklands.com.au](mailto:parkland.events@cityparklands.com.au)

Or call 07 3029 1888